

Pull-Only Brake Controls

800 Control Cable Assemblies

This 800 lb. pull-only brake cable provides an efficient and flexible means to transmit pull only motion between two mechanical devices. Simple to install and easy to maintain, our versatile pull controls are found on many types of mechanical equipment.

Common Applications: Brake levers, lift levers, and steering assemblies

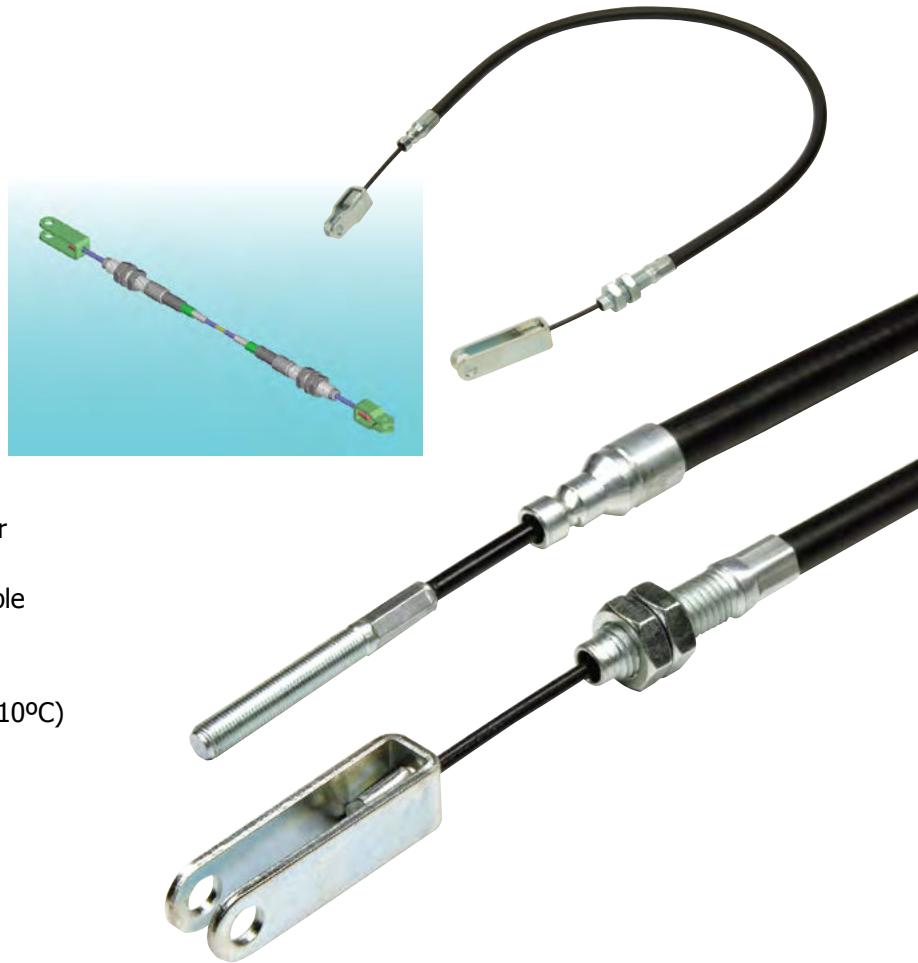
- All hardware meets recognized industry related standards for environmental protection and corrosion resistance
- Wide variety of fittings to meet our customers design needs

Material:

- Standard 1 x 19 galvanized wire rope innermember with nylon jacket
- Nylon core, galvanized stranded conduit with durable nylon covering

Specifications:

- Operating Temperature: -65°F – 185°F (-54°C – 110°C)
- Minimum Bend Radius: 5" (152 mm)



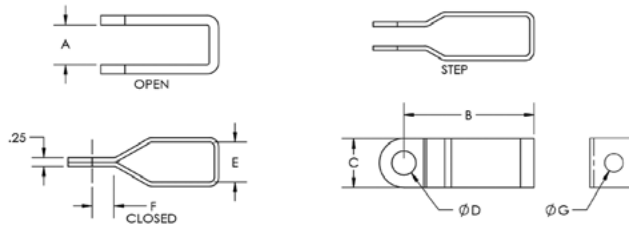
Cablecraft[®]
Motion Controls



Connecting a World
in Motion

Pull-Only Brake Controls

| Strap Clevis Part Numbers (Dimensions - Inches) | | | | | | | | |
|---|-----------|------|------|------|------|------|------|-------|
| | Part No. | A | B | C | D | E | F | G |
| Open | CS540 | 0.43 | 1.62 | 0.62 | 0.31 | -- | -- | 0.266 |
| | CS540-001 | 0.51 | 1.62 | 0.62 | 0.31 | -- | -- | 0.266 |
| | CS540-007 | 0.51 | 2.50 | 0.62 | 0.31 | -- | -- | 0.266 |
| | CS541 | 0.51 | 1.94 | 0.75 | 0.38 | -- | -- | 0.266 |
| Step | CS550 | 0.19 | 1.56 | 0.62 | 0.31 | 0.51 | 0.31 | 0.266 |
| | CS550-004 | 0.19 | 1.56 | 0.62 | 0.25 | 0.51 | 0.31 | 0.266 |
| | CS551 | 0.25 | 1.75 | 0.62 | 0.31 | 0.51 | 0.38 | 0.266 |
| | CS551-001 | 0.25 | 1.75 | 0.62 | 0.38 | 0.51 | 0.38 | 0.266 |
| | CS551-003 | 0.25 | 1.50 | 0.62 | 0.25 | 0.51 | 0.38 | 0.266 |
| | CS552 | 0.25 | 2.38 | 0.75 | 0.31 | 0.51 | 0.31 | 0.266 |
| | CS552-001 | 0.25 | 2.38 | 0.75 | 0.38 | 0.51 | 0.31 | 0.266 |
| Closed | CS563 | -- | 1.75 | 0.62 | 0.31 | 0.51 | 0.28 | 0.316 |



| Threaded Conduit Cap Part Numbers and Detail | | | | | | | | | |
|--|------------------------|--------|---------------------------|------|------------------|------|----------|-------------|-------------|
| Part No. | Thread | A Dia. | B | C | D | E | E w/Seal | Trim Length | Swage Dia. |
| 161-387-209 | 9/16 - 12 | 0.625 | 1.50 | 2.37 | .025 | 0.75 | 0.63 | 0.50 | .587 / .577 |
| | Carbon Nut 175-412-209 | | Carbon Washer 175-413-020 | | Seal 159-002-001 | | | | |
| 161-387-210 | 7/16 - 20 | 0.625 | 1.38 | 2.37 | 0.25 | 0.75 | 0.63 | 0.50 | .587 / .577 |
| | Carbon Nut 175-412-036 | | Carbon Washer 175-413-016 | | Seal 159-002-001 | | | | |
| 161-387-211 | 3/8 - 24 | 0.563 | 1.25 | 2.37 | 0.25 | 0.75 | 0.63 | 0.50 | .505 / .515 |
| | Carbon Nut 175-412-005 | | Carbon Washer 175-413-020 | | Seal 159-002-001 | | | | |

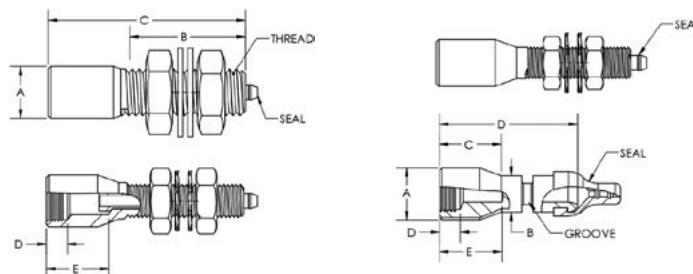
| Grooved Conduit Cap Part Numbers and Detail | | | | | | | | | |
|---|-----------------------|--------|-------|------|---------------------------|------|----------|-------------|-------------|
| Part No. | Groove Dim. | A Dia. | B | C | D | E | E w/Seal | Trim Length | Swage Dia. |
| 161-387-212 | .131 x .250 | 0.625 | 0.438 | 0.74 | 1.66 | 0.75 | 0.75 | 0.50 | .587 / .577 |
| | Seal p.n. 175-328-001 | | | | U-bolt w/nuts 161-010-001 | | | | |

Standard conduit caps:

- Zinc plated per ASTM B633, RoHS Compliant

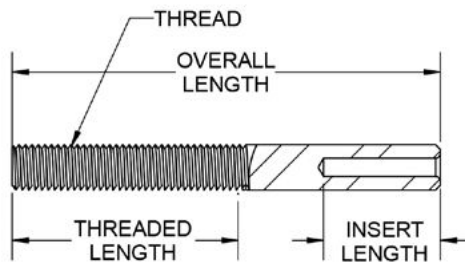
Specifications:

- Salt Spray: 96 hr white corrosion
- End Rod Pull-Off: 1.25 min. FOS vs load rating

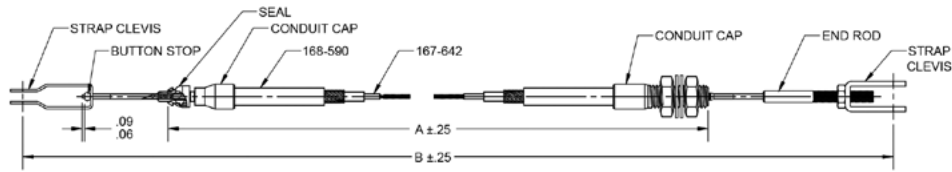


End Rod Part Number and Detail (Dimensions - Inches)

| Part No. | Thread | Overall Length | Minimum Thread Length | Insert Length | Swage Hex | Swage Length | Swage Index |
|----------------------|-----------------|----------------|-----------------------|---------------|-----------|--------------|-------------|
| TE800-150-075 | 5/16-24 Unit-2A | 1.50 | 0.75 | 0.75 | .270+003 | 0.500 | 0.12 |
| TE800-175-100 | 5/16-24 Unit-2A | 1.75 | 1.00 | 0.75 | .270+003 | 0.500 | 0.12 |
| TE800-200-100 | 5/16-24 Unit-2A | 2.00 | 1.00 | 0.75 | .270+003 | 0.500 | 0.12 |
| TE800-225-100 | 5/16-24 Unit-2A | 2.25 | 1.00 | 0.75 | .270+003 | 0.500 | 0.12 |
| TE800-225-125 | 5/16-24 Unit-2A | 2.25 | 1.25 | 0.75 | .270+003 | 0.500 | 0.12 |
| TE800-250-125 | 5/16-24 Unit-2A | 2.50 | 1.25 | 0.75 | .270+003 | 0.500 | 0.12 |
| TE800-250-150 | 5/16-24 Unit-2A | 2.50 | 1.50 | 0.75 | .270+003 | 0.500 | 0.12 |
| TE800-275-150 | 5/16-24 Unit-2A | 2.75 | 1.50 | 0.75 | .270+003 | 0.500 | 0.12 |
| TE800-275-175 | 5/16-24 Unit-2A | 2.75 | 1.75 | 0.75 | .270+003 | 0.500 | 0.12 |
| TE800-300-150 | 5/16-24 Unit-2A | 3.00 | 1.50 | 0.75 | .270+003 | 0.500 | 0.12 |
| TE800-300-200 | 5/16-24 Unit-2A | 3.00 | 2.00 | 0.75 | .270+003 | 0.500 | 0.12 |
| TE800-325-150 | 5/16-24 Unit-2A | 3.25 | 1.50 | 0.75 | .270+003 | 0.500 | 0.12 |
| TE800-325-200 | 5/16-24 Unit-2A | 3.25 | 2.00 | 0.75 | .270+003 | 0.500 | 0.12 |
| TE800-350-250 | 5/16-24 Unit-2A | 3.50 | 2.50 | 0.75 | .270+003 | 0.500 | 0.12 |
| TE800-350-200 | 5/16-24 Unit-2A | 3.50 | 2.00 | 0.75 | .270+003 | 0.500 | 0.12 |
| TE800-375-250 | 5/16-24 Unit-2A | 3.75 | 2.50 | 0.75 | .270+003 | 0.500 | 0.12 |
| TE800-375-200 | 5/16-24 Unit-2A | 3.75 | 2.00 | 0.75 | .270+003 | 0.500 | 0.12 |
| TE800-400-250 | 5/16-24 Unit-2A | 4.00 | 2.50 | 0.75 | .270+003 | 0.500 | 0.12 |
| TE800-400-200 | 5/16-24 Unit-2A | 4.00 | 2.00 | 0.75 | .270+003 | 0.500 | 0.12 |
| TE800-450-250 | 5/16-24 Unit-2A | 4.50 | 2.50 | 0.75 | .270+003 | 0.500 | 0.12 |
| TE800-450-200 | 5/16-24 Unit-2A | 4.50 | 2.00 | 0.75 | .270+003 | 0.500 | 0.12 |
| TE554 | #10-32 Unit-2A | 1.40 | 0.75 | 0.75 | .162+003 | 0.440 | 0.12 |
| TE543 | 1/4-28 Unit-2A | 1.94 | 1.13 | 0.75 | .221+003 | 0.500 | 0.12 |
| TE540 | M6x-1-6g | 2.45 | 1.33 | 0.75 | .221+003 | 0.500 | 0.12 |
| TE524 | M6x-1-6g | 1.38 | 0.62 | 0.75 | .221+003 | 0.500 | 0.12 |
| TE527 | M6x-1-6g | 1.55 | 0.75 | 0.75 | .221+003 | 0.500 | 0.12 |
| TE526 | M6x-1-6g | 1.71 | 1.18 | 0.75 | .221+003 | 0.500 | 0.12 |



Pull-Only Brake Controls



To specify a pull-only cable, the following information must be given in the order listed:

1. Left innermember end fitting part number.
Enter 000 if no fitting is required.
2. Left conduit end fitting part number.
3. Length "A" between conduit fitting reference points.
4. Right conduit end fitting part number.
5. Right innermember end fitting part number.
6. Length "B" of innermember assembly between fitting reference points.
7. Travel of innermember in reference to conduit.

(Note: Dimension "B" must be significantly longer than dimension "A" to allow desired travel.)

Cablecraft® Ordering Codes

CS540 - 011 - 54.5 - 021 - TE100 - 60.25

Member End Fitting Part Number

Left Conduit End Fitting Part Number

Assembly

("A" Dimension)

Right Conduit End Fitting Part Number

Right Innermember End Part Number

Member Assembly

("B" Dimension)

Distributed by:

Cablecraft®
Motion Controls

2110 Summit Street
New Haven, Indiana USA 46774
Tel 260 749-5105 Fax 260 749-5677

4401 South Orchard Street
Tacoma, Washington USA 98466
Tel 253 475-1080 Fax 253 474-1623

2789 Old Belleville Road
St. Matthews, South Carolina USA 29135
Tel 803 655-7300 Fax 803 874-3558

Diplocks Way-South Road
Hailsham, E. Sussex BN27 3JF, England
Tel (011-44) 1323-841510 Fax (011-44) 1323-845848

Warning: Since the manufacturer is unable to determine all applications in which a part may be placed, it is the user's responsibility to determine the suitability of the part for its intended use. This is especially true where safety is a factor. Incorrect application or installation may result in property damage, bodily injury, or death. For technical assistance, call 260-749-5105.

www.cablecraft.com