

SR-G

Hardened Steel Housing, Retaining Ring Design with Rubber Grommet



Ball Joints

Suitable for many applications requiring integral ball joints, the Cablecraft SR-G Series (SAE J490/Type G/Style 4) offers many similarities to our metal to metal R-G ball joint design... but with a hardened steel housing and ball stud combination to increase overall wear life.

All parts are manufactured from low carbon steel and heat-treated for long life and wear resistance. In addition, they are zinc plated and clear dichromate treated for corrosion resistance and consistent appearance. The precision ball stud is inserted into the shell and locked in place by a pre-located snap ring allowing for sufficient movement of the ball stud without excessive play. The integrated retaining ring is produced from stress-relieved, galvanized music wire and helps to better retain the ball stud within the hardened body housing. A rubber grommet seal provides for durable contaminant protection. Right and left-handed threads (for metric sizes — consult factory) are available in a variety of configurations.

The SR-G Series is just one of many within our broad line of ball joints. For full product line detail, contact us for a comprehensive catalog or visit www.cablecraft.com and download individual product data sheets and other product information.



Description:

SR-G Series Ball Joints
Hardened Steel Housing,
Retaining Ring Design with
Rubber Grommet

Applications:

Various integral ball joint applications, including:

- Lawn and garden equipment
- Construction
- Industrial equipment

Features:

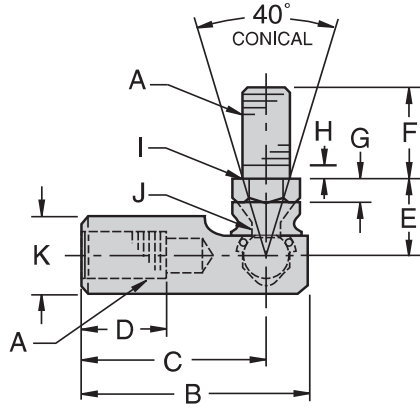
- Heat treated steel body, ball stud and retaining ring design offers economic solution to medium to heavy-duty ball joint applications
- Ball stud and body are case hardened for extended wear life
- Retaining ring assembly helps to prevent ball stud pull out in higher force applications
- Rubber grommet provides a durable seal against contaminants
- Can be used in a wide range of temperatures:
-30°F — 250°F
(-34°C — 121°C)
- Custom sizes and assemblies can be built to your specifications, including:
 - male to male or female to female
 - right or left-handed threads
- Many metric sizes available — consult factory
- Meets SAE specification J490 (Type G/Style 4)

Other Related Products:

- R-G Steel Housing, Staked Design with Rubber Grommet
- S/SS/SC Quick Disconnect with Spring or Spring Clip

SR-G

Hardened Steel Housing, Retaining Ring Design with Rubber Grommet



Material

Ball Stud

- Low Carbon Steel, Heat Treated
- Zinc Plated, Clear Dichromate Treated

Body

- Low Carbon Steel, Heat Treated
- Zinc Plated, Clear Dichromate Treated

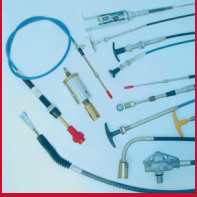
Retaining Ring

- Galvanized Music Wire
- Stress Relieved

SR-G CHART																
Part Number		A	B	C	D	E	F	G	H	I	J	K	W.F. Width	W.F. Length	Tensile & Shear Strength (Pounds)	Force to Remove Ball Stud (Pounds)
Right Hand	Left Hand	UNF	±.020	±.020	MIN	±.020	±.020	REF	REF	REF	REF	REF				
SR103G	Inquire	10-32	1.219	.969	.469	.469	.437	.125	.063	.375	.217	.437	.375	.28	420	1,400
SR107G	SR107GLH	1/4-28	1.219	.969	.531	.469	.562	.125	.063	.375	.217	.437	.375	.28	882	1,400
SR108G	SR108GLH	5/16-24	1.406	1.125	.562	.531	.687	.156	.094	.437	.232	.500	.437	.28	1,375	1,575
SR109G	SR109GLH	3/8-24	1.687	1.375	.750	.687	.875	.187	.094	.500	.284	.625	.500	.31	1,675	2,000
SR111G	SR111GLH	1/2-20	2.375	1.937	1.125	.875	1.125	.250	.125	.625	.382	.750	.625	.38	2,637	2,855
SR112G	SR112GLH	5/8-18	2.578	2.062	1.000	1.000	1.125	.312	.125	.750	.417	.875	.750	.50	2,920	3,135

Chart Notes: 1. Ball Joint can be ordered without the grommet by dropping the "G" suffix. Example: SR107

Linking Motion & Control...
The Cablecraft Solution



WARNING!

Since the manufacturer is unable to determine all applications in which a part may be placed, it is the user's responsibility to determine the suitability of the part for its intended use. This is especially true where safety is a factor. Incorrect application or installation may result in property damage, bodily injury, or death. For technical assistance, call 260-749-5105.

Cablecraft®
Cablecraft Motion Controls

2110 Summit Street
New Haven, Indiana USA 46774
Tel 260 749-5105 Fax 260 749-5677

4401 South Orchard Street
Tacoma, Washington 98411 USA
Tel 253 475-1080 Fax 253 474-1623

Diplocks Way-South Road
Hailsham, East Sussex BN27 3JF, England
Tel 44 1323 841510 Fax 44 1323 845848

www.cablecraft.com