

# J/JM

Metric/Inch, Molded Race,  
Self-Lubricating



## Spherical Bearings

Our J/JM Series is our low carbon steel grade with injection molded race spherical bearing offering. It includes a cost-effective, injection-molded raceway design that delivers self-lubricating characteristics, as well as moisture-resistance properties, adding to its overall versatility. It is suitable for a wide variety of OEM and MRO applications. It features a low carbon steel ball that is case hardened and nickel-plated. The race is black oxide-coated for added corrosion protection. It is available in English and metric sizes.

The J/JM Series is just one of many products found within our broad line of spherical bearings. For full product line detail, contact us for a comprehensive catalog or visit [www.cablecraft.com](http://www.cablecraft.com) and download individual product data sheets and other product information.



### Description:

J/JM Spherical Bearings  
Metric/Inch, Molded Race,  
Self-Lubricating

### Applications:

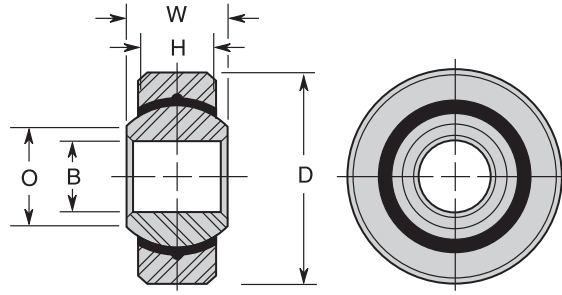
Numerous spherical (non-rotational) bearing applications across a wide range of OEM and MRO markets, including:

- Industrial equipment
- Construction equipment
- Lawn and garden/agricultural

### Features:

- Suited to numerous non-rotational applications — for mounting into plates or shocks where room for attaching full rod ends is not available
- Injection molded, thermoplastic race design minimizes friction between working surfaces (lower maintenance, increased life)
- Can be used in a wide range of temperatures: -30°F — 220°F (-34°C — 104°C)

Metric/Inch, Molded Race,  
Self-Lubricating



## Material

### Ball

- Low Carbon Steel
- Case Hardened
- Nickel Plated

### Race

- Low Carbon Steel
- Black Oxide Coating

### Liner

- Self-Lubricating Thermoplastic

## J CHART

Part Number	B +.0020 -.0005	D +.0000 -.0005	H +.000 -.005	W ±.0005	O REF	Ultimate Radial Static Load Capacity (Pounds)
	Ball Bore	Outside Diameter	Race Width	Ball Width	Ball Flat Diameter	
J03ST	.1900	.5625	.218	.281	.293	1,102
J04ST	.2500	.6562	.250	.343	.364	1,607
J05ST	.3125	.7500	.281	.375	.419	2,700
J06ST	.3750	.8125	.343	.406	.475	2,943
J07ST	.4375	.9062	.312	.437	.530	3,619
J08ST	.5000	1.0000	.390	.500	.600	4,328
J10ST	.6250	1.1875	.500	.625	.739	6,800

## JM CHART

Part Number	B +.063 -.013	D +.000 -.013	H +.000 -.100	W ±.013	O REF	Ultimate Radial Static Load Capacity (Newtons)
	Ball Bore	Outside Diameter	Race Width	Ball Width	Ball Flat Diameter	
J03MST	3	12	4.50	6	5.20	3,040
J05MST	5	16	6.00	8	7.50	5,340
J06MST	6	18	6.75	9	9.30	7,720
J08MST	8	22	9.00	12	10.40	12,775
J10MST	10	26	10.50	14	12.90	16,960
J12MST	12	30	12.00	16	15.40	22,900
J14MST	14	34	13.50	19	16.80	28,950
J16MST	16	38	15.00	21	19.30	37,130

## WARNING!

Since the manufacturer is unable to determine all applications in which a part may be placed, it is the user's responsibility to determine the suitability of the part for its intended use. This is especially true where safety is a factor. Incorrect application or installation may result in property damage, bodily injury, or death. For technical assistance, call 260-749-5105.

**Cablecraft®**  
Cablecraft Motion Controls

2110 Summit Street  
New Haven, Indiana USA 46774  
Tel 260 749-5105 Fax 260 749-5677

4401 South Orchard Street  
Tacoma, Washington 98411 USA  
Tel 253 475-1080 Fax 253 474-1623

Diplocks Way-South Road  
Hailsham, East Sussex BN27 3JF, England  
Tel 44 1323 841510 Fax 44 1323 845848

[www.cablecraft.com](http://www.cablecraft.com)

Linking Motion  
& Control...  
The Cablecraft  
Solution

