

DBM/DBF

4-Piece, Bronze Race,
Oil Impregnated, Metric



Rod Ends Industrial/ Commercial

Suitable for many high precision/mechanical motion transfer applications, the Cablecraft DBM/DBF Series offers a four-piece, bronze race design in metric thread sizing. Its oil impregnated bronze raceway delivers precise and extremely low friction performance, leading to longer wear life, higher temperature performance and lower maintenance costs. Ball materials are produced from bearing quality steel that is thru hardened and finish ground, adding to its precision fit and increased wear performance. Body materials are produced from economical low carbon steel and are zinc plated for extended corrosion resistance. Its clear chromate treatment is suited for high visibility exposed surfaces requiring aesthetically pleasing bright metal finishes. It can be used in a wide operating temperature range. Studded and right or left-handed thread versions are available. Grease fittings are optionally available.

The DBM/DBF Series is just one of many within our broad line of industrial/commercial rod ends. For full product line detail, contact us for a comprehensive catalog or visit www.cablecraft.com and download individual product data sheets and other product information.



Description:

DBM/DBF
Industrial/Commercial Rod Ends
4-Piece, Bronze Race,
Oil Impregnated, Metric

Applications:

Numerous precision mechanical motion transfer devices/applications, including:

- Industrial equipment
- Precision machinery

Features:

- Oil impregnated bronze raceway delivers longer wear life and lowers maintenance cost (high precision, frictionless performance)
- Can be used in a wide range of temperatures (including ultra high temp):
-30°F — 300°F
(-34°C — 149°C)
- Offered in studded and right or left-handed versions
- Special custom alloy construction available
- Custom assemblies can be built to your specifications
- Meets ISO 12240 (DIN 648)

DBM/DBF

Material

Ball

- 52100 Steel
Rc 56 Min.
- Hard Chrome
Plated

Body

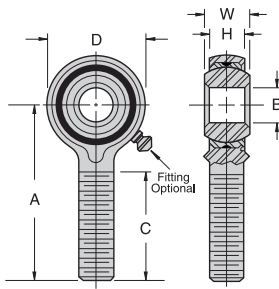
- Low Carbon Steel
- Zinc Plated, Clear
Dichromate Treated

Race

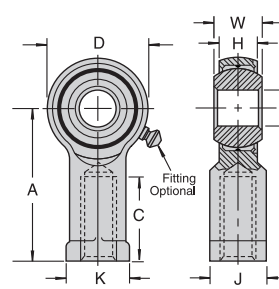
- Sintered Phosphor
Bronze
- Oil Impregnated

4-Piece, Bronze Race,
Oil Impregnated, Metric

DBM



DBF



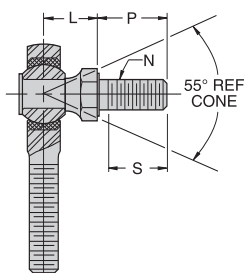
DBM Chart

Part Number		B +0.063 -0.013	W ±.13	H ±.05	A ±.25	C Min.	D ±.13	6g	Ultimate Radial Static Load Capacity (Newtons)	Ball Diameter Ref.	Weight (Grams)
Right Hand	Left Hand	Ball Bore	Ball Width	Body Width	Centerline Length	Thread Length	Head Diameter	Thread Size			
DBM5	DBML5	5	8	6.00	33	20	18	M5x0.8	3,000	13	15
DBM6	DBML6	6	9	6.75	36	22	20	M6x1.0	4,000	16	20
DBM8	DBML8	8	12	9.00	42	25	24	M8x1.25	8,000	19	35
DBM10	DBML10	10	14	10.50	48	29	28	M10x1.5	13,000	22	50
DBM12	DBML12	12	16	12.00	54	33	32	M12x1.75	17,000	26	65
DBM14	DBML14	14	19	13.50	60	36	36	M14x2.0	24,000	29	100
DBM16	DBML16	16	21	15.00	66	40	42	M16x2.0	28,500	32	179
DBM20	DBML20	20	25	18.00	78	47	50	M20x1.5	42,000	40	289

DBF Chart

Part Number		B +0.063 -0.013	W ±.13	H ±.05	A ±.25	C Min.	D ±.13	6H	K ±.2	J +0 -.2	Ultimate Radial Static Load Capacity (Newtons)	Ball Diameter Ref.	Weight (Grams)
Right Hand	Left Hand	Ball Bore	Ball Width	Body Width	Centerline Length	Thread Length	Head Diameter	Thread Size	W.F. Diameter	W.F. Width			
DBF5	DBFL5	5	8	6.00	27	10	18	M5x0.8	11	9	6,000	13	15
DBF6	DBFL6	6	9	6.75	30	12	20	M6x1.0	13	11	7,000	16	19
DBF8	DBFL8	8	12	9.00	36	16	24	M8x1.25	16	14	12,000	19	30
DBF10	DBFL10	10	14	10.50	43	20	28	M10x1.5	19	17	14,500	22	40
DBF12	DBFL12	12	16	12.00	50	22	32	M12x1.75	22	19	17,000	26	75
DBF14	DBFL14	14	19	13.50	57	22	36	M14x2.0	25	22	24,000	29	124
DBF16	DBFL16	16	21	15.00	64	28	42	M16x2.0	27	22	28,500	32	174
DBF20	DBFL20	20	25	18.00	77	33	50	M20x1.5	34	32	45,000	40	358

Chart Notes: 1. For standard lubrication fitting, add "Z" to suffix. Example: DBM10Z. 2. This series is also available in a studded configuration. Specify by adding "S" to suffix. Example: DBM10S. 3. All dimensions are listed in millimeters unless otherwise noted.



Studded Dimensions

Rod End Bore Size	L REF	P ±.030	S Min. Thread Length	N 6g
5mm	9.0	13.0	10.0	M5x.8
6mm	10.0	14.0	11.0	M6x1.0
8mm	12.0	17.5	14.0	M8x1.25
10mm	16.5	23.0	19.5	M10x1.5
12mm	19.5	28.5	24.5	M12x1.75
14mm	20.5	33.0	29.0	M14x2.0
16mm	24.0	38.0	34.0	M16x2.0

WARNING!

Since the manufacturer is unable to determine all applications in which a part may be placed, it is the user's responsibility to determine the suitability of the part for its intended use. This is especially true where safety is a factor. Incorrect application or installation may result in property damage, bodily injury, or death. For technical assistance, call 260-749-5105.

Cablecraft
Cablecraft Motion Controls

2110 Summit Street
New Haven, Indiana USA 46774
Tel 260 749-5105 Fax 260 749-5677

4401 South Orchard Street
Tacoma, Washington 98411 USA
Tel 253 475-1080 Fax 253 474-1623

Diplocks Way-South Road
Hailsham, East Sussex BN27 3JF, England
Tel 44 1323 841510 Fax 44 1323 845848

www.cablecraft.com