

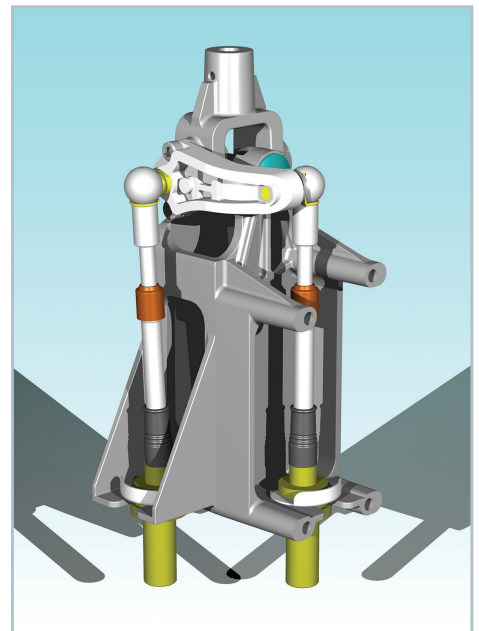
# Vertical Gear Shifter – 918 Series

## Industrial VGS Systems

Based on the proven quality and performance of Cablecraft® low friction control cables, our manual transmission shifter system provides a maintenance-free, cost-effective approach that makes remote shifting easier to build and use.

**Common Applications:** Dash or center console mounted shifter, small commercial vehicles, servo assisted transmission – bus and coach applications, light plant and agricultural vehicles, low to medium duty cable applications

- Easy installation, adjustment free
- Maintenance-free life
- Ends gear jump out
- Clean precise shifts
- No knob-to-cab relative movement in floating cabs
- No action required to tilt cab
- Vibration from drive train is not transmitted
- Reduced cab noise levels
- Installation design to customer requirements
- Flexible capability with different cable end fittings



**Cablecraft®**  
Motion Controls

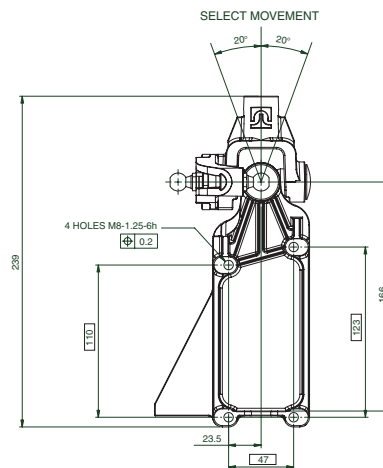
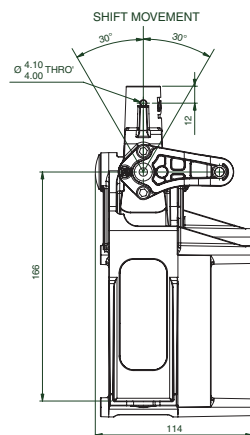
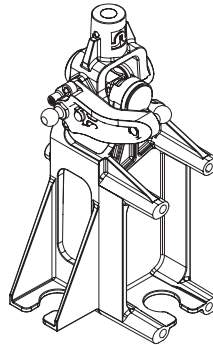
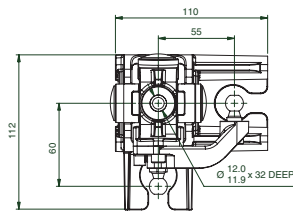


**Connecting a World  
in Motion**

# Vertical Gear Shifter – 918 Series

## Technical Data

- Recommended handle lengths:  
160mm to 220mm (6-1/4" - 8-1/4" approx.)
- Normal working load @ knob = 3 kg (6.6 lb.)  
to 5 kg (11 lb.)
- Accidental overload @ knob = 100kg (220 lb.)
- Operating temperatures: -40°C to 120°C  
(-40°F to 248°F)
- Weight: 1.1kg (2.4 lb.)



Distributed by:

**Cablecraft**<sup>®</sup>  
Motion Controls

2110 Summit Street  
New Haven, Indiana USA 46774  
Tel 260 749-5105 Fax 260 749-5677

4401 South Orchard Street  
Tacoma, Washington USA 98466  
Tel 253 475-1080 Fax 253 474-1623

**www.cablecraft.com**

2789 Old Belleville Road  
St. Matthews, South Carolina USA 29135  
Tel 803 655-7300 Fax 803 874-3558

Diplocks Way-South Road  
Hailsham, E. Sussex BN27 3JF, England  
Tel (011-44) 1323-841510 Fax (011-44) 1323-845848

**Warning:** Since the manufacturer is unable to determine all applications in which a part may be placed, it is the user's responsibility to determine the suitability of the part for its intended use. This is especially true where safety is a factor. Incorrect application or installation may result in property damage, bodily injury, or death. For technical assistance, call 260-749-5105.