

# Linkages/Controls

## Rod Ends

### EM/EF

Commercial,  
2-Piece,  
Metal to Metal

### EM-T/EF-T

Commercial,  
2-Piece, PTFE Lined

### EM-M/EF-M

● Commercial, 2-Piece, Metal to Metal, Metric

### SPM/SPF

Molded Race, Self-Lubricating

### MJ-M/FJ-M

● Molded Race, Self-Lubricating, Metric

### SSPM/SSPF

Stainless Steel, Molded Race, Self-Lubricating



## Ball Joints

### R-G

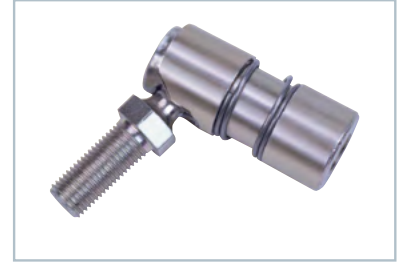
Steel Housing,  
Staked Design  
with Rubber  
Grommet

### SR-G

Hardened Steel  
Housing,  
Retaining Ring  
Design with Rubber Grommet

### S/SS/SC

Quick Disconnect with Spring or Spring Clip



## Swivels

### DC/DH

Control Swivels



## Linkage Assemblies

### Custom Rod Assemblies



● Colored bullet denotes metric version

## Connecting a World in Motion



# Cables/Controls

## Control Cable Assemblies

Industrial/Commercial

**PUSH-PULL STANDARD**  
Versatile Control



**PULL-ONLY BRAKE**  
1500 and 3000 Series



**PULL-ONLY CLUTCH**  
High Load Capability



**PULL-ONLY TENSION**  
Throttle Control

**PUSH-PULL BLUE MAX™**  
Marine Control

## Control Heads

Industrial/Commercial

**MICRO ADJUST**  
Push-Pull



**NON LOCK**  
Push-Pull



**TWIST LOCK**  
Push-Pull

## Hand Control Assemblies

Industrial

**BRAKE LEVER**  
Over Center Locking Control



**CUSTOM HAND CONTROLS**  
Push-Pull



## Foot Control Assemblies

Industrial

**THROTTLE PEDAL**  
Heavy Duty



## Connecting a World in Motion



Distributed by:

**Cablecraft**  
Motion Controls

[www.cablecraft.com](http://www.cablecraft.com)