

# Throttle Pedal – Heavy Duty

## Foot Control

Heavy-Duty Throttle Pedals are available in two configurations:

001 – Foot throttle only design

002 – Adds hardware allowing for a manual remote hand operated throttle control

**Commons Applications:** Medium and heavy-duty trucks, construction and farm equipment, buses

- Torsion spring is incorporated for idle position return
- Environmental contamination is minimized by a plastic boot installed between the pedal and mounting base
- Idle pedal position and throttle travel is adjustable to meet user requirements
- Entire lower portion of assembly can be inserted through a cutout in the floor, and will rotate 360° and down 30° maximum from horizontal to optimize throttle cable routing
- Multiple fastener holes incorporated into the base to accommodate different mounting patterns
- Pedal surface is ribbed to reduce foot slippage, and increase strength

**Material:**

- Corrosion-resistant die cast components
- Plated steel hardware
- Plastic bushings
- Plated steel internal/external components



*Shown with optional  
Unidrum hand  
throttle control*

**Cablecraft®**  
Motion Controls

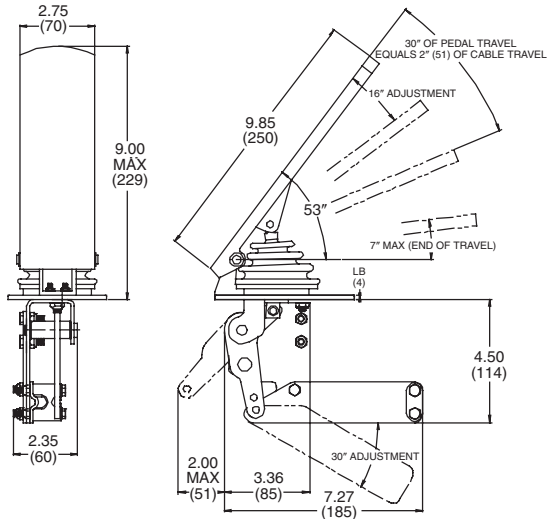


**Connecting a World  
in Motion**

# Throttle Pedal – Heavy Duty

## Standard Pedal 165-574-001

For use with one Pull-Only accelerator cable.

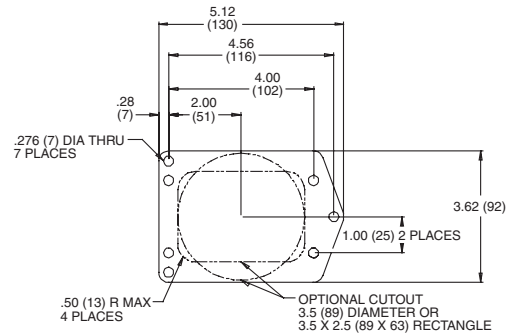
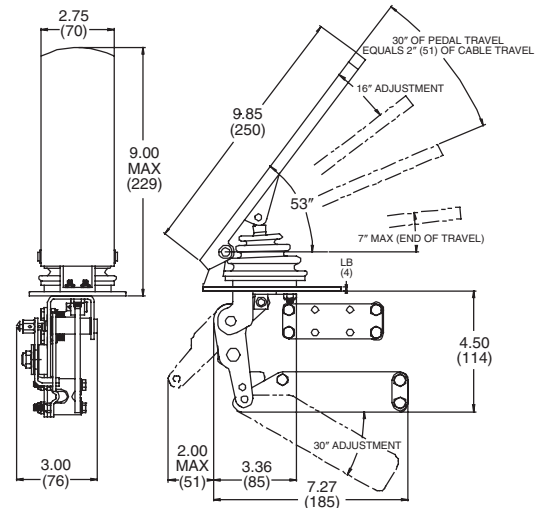


### Fast and Economical Installation

A throttle cable simplifies the installation, providing a complete system to suit many applications.

The pedal tower mechanism is designed to be dropped through the floor and secured. Cable attachment can then be quickly and easily completed.

Additional cable mounting bracket for use with a hand throttle (see Unidrum).



Distributed by:

**Cablecraft**  
Motion Controls

2110 Summit Street  
New Haven, Indiana USA 46774  
Tel 260 749-5105 Fax 260 749-5677

4401 South Orchard Street  
Tacoma, Washington USA 98466  
Tel 253 475-1080 Fax 253 474-1623

2789 Old Belleville Road  
St. Matthews, South Carolina USA 29135  
Tel 803 655-7300 Fax 803 874-3558

Diplocks Way-South Road  
Hailsham, E. Sussex BN27 3JF, England  
Tel (011-44) 1323-841510 Fax (011-44) 1323-845848

**Warning:** Since the manufacturer is unable to determine all applications in which a part may be placed, it is the user's responsibility to determine the suitability of the part for its intended use. This is especially true where safety is a factor. Incorrect application or installation may result in property damage, bodily injury, or death. For technical assistance, call 260-749-5105.

**www.cablecraft.com**